

Q2 2026

# Ritakallionmaa

## Orogenic Gold District

### Huittinen, SW Finland

**Contact**

jeff@geomorphic.ai  
www.geomorphic.ai



# Project Highlights



## District Package

~11,400 hectares in a proven orogenic gold belt

## Multiple Targets

Ritakallio 8.6 m @ 7.18 g/t +  
Palokallio 4.75 m @ 9.10 g/t

## Producing Au District

Adjacent to the Jokisivu Mine (Dragon Mining) — same belt, same style

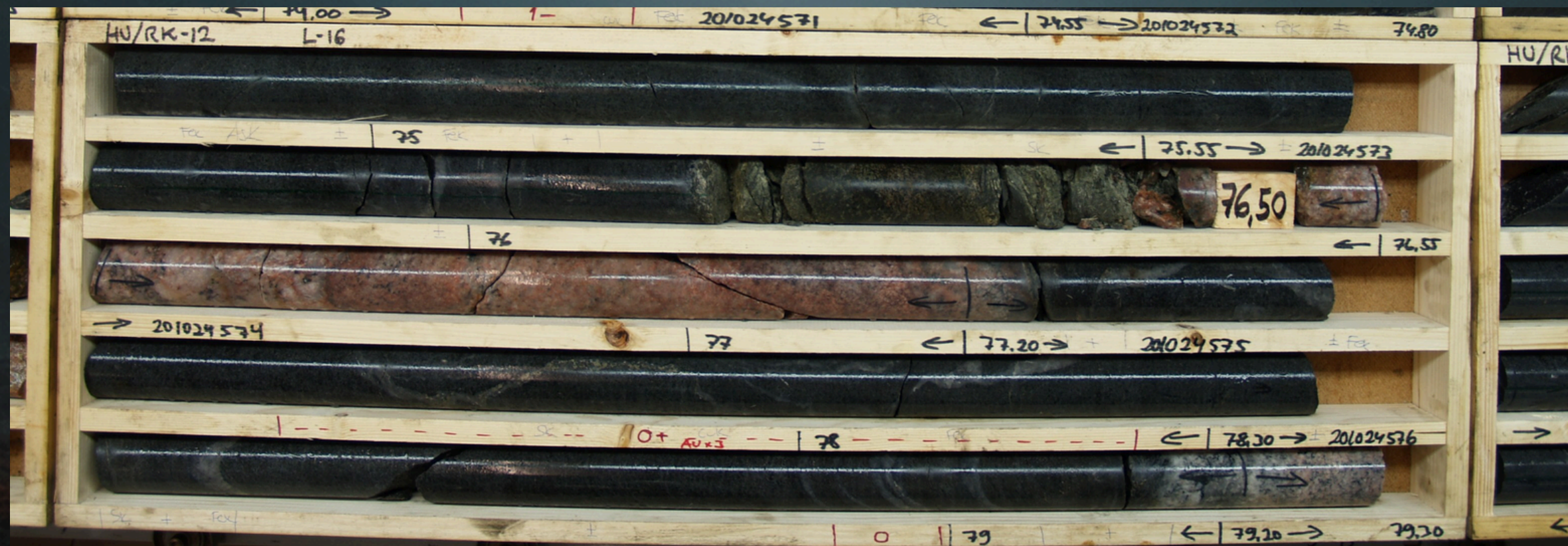
- Two drilled orogenic gold shoots on one contiguous land package in a proven, producing district.
- Same paragenesis, host and structure as the Jokisivu mine a few km W along strike — ~3.7 Mt @ 2.8 g/t Au mined there since 2009, still open at depth.
- Rita 1 drilled core (**30 holes, 21/30  $\geq$  1 g/t Au**) plus the Palokallio satellite (**13/17  $\geq$  0.5 g/t Au**).
- Resource upside on multiple fronts:
  - Both shoots open at depth (nothing drilled below ~85 m vertical — **20.7 m @ 1.43 g/t Au to 1 m above EOH**)
  - Palokallio's W/S/E margins untested (~24% of the host drilled).

# Project Overview



A two-stage land position over the western Vammala Migmatite Belt.

- Rita 1 (2,526 ha) — the drilled evidence core, over 27 of the 30 Ritakallio holes.
- Rita 2 extension (8,916 ha) — a district ring that brings in the Palokallio satellite.
- Drill-target-ready, with the data already in hand.
- 53 historic holes (~4,600 m) with digitized per-metre assays, plus extensive till and boulder geochem.
- Combined district position: ~11,442 ha.



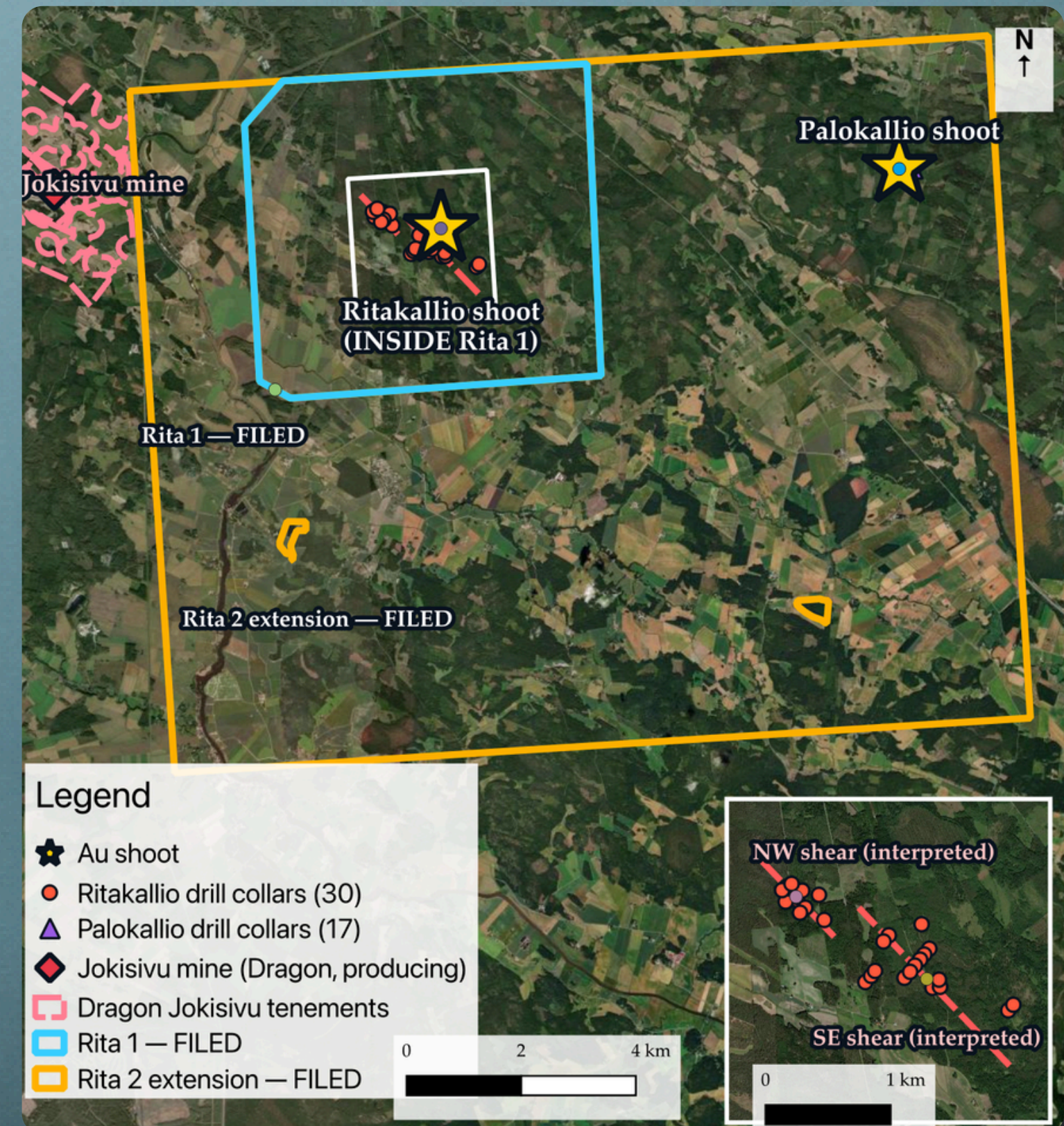
HU/RK-12, 74.0–79.3 m — within 8.60 m @ 7.18 g/t Au, incl. 1.10 m @ 49.80 g/t at 77.2 m

# Deposit Geology & Mineralization



## Paleoproterozoic orogenic shear-hosted gold

- Host rock: a 2.3 km × 600 m diorite-gabbro intrusion in mica schist — the same rock type that hosts Dragon's Jokisivu mine.
- Structure: two parallel gold-bearing shear zones cross the Rita 1 ground ~800 m apart (interpreted strike ~320°, dip ~75° SW) — each shear is its own drill target (white box = inset).
- Ore style: free gold plus gold in arsenopyrite–löllingite, with Au-Bi-Sb-Te intergrowths — verified in 34 polished sections, a one-for-one match with Jokisivu ore.
- Age & setting: ~1.90 Ga island-arc rocks reworked by ~1.88 Ga migmatization — textbook Svecofennian orogenic gold in the Vammala Migmatite Belt.



Deposit Map: Rita 1 + Rita 2 boundaries (simplified); two interpreted shear zones (inset).

# Drilling Highlights



**Two independently-drilled gold shoots; widths downhole (true width ~1.0x on the main structure).**

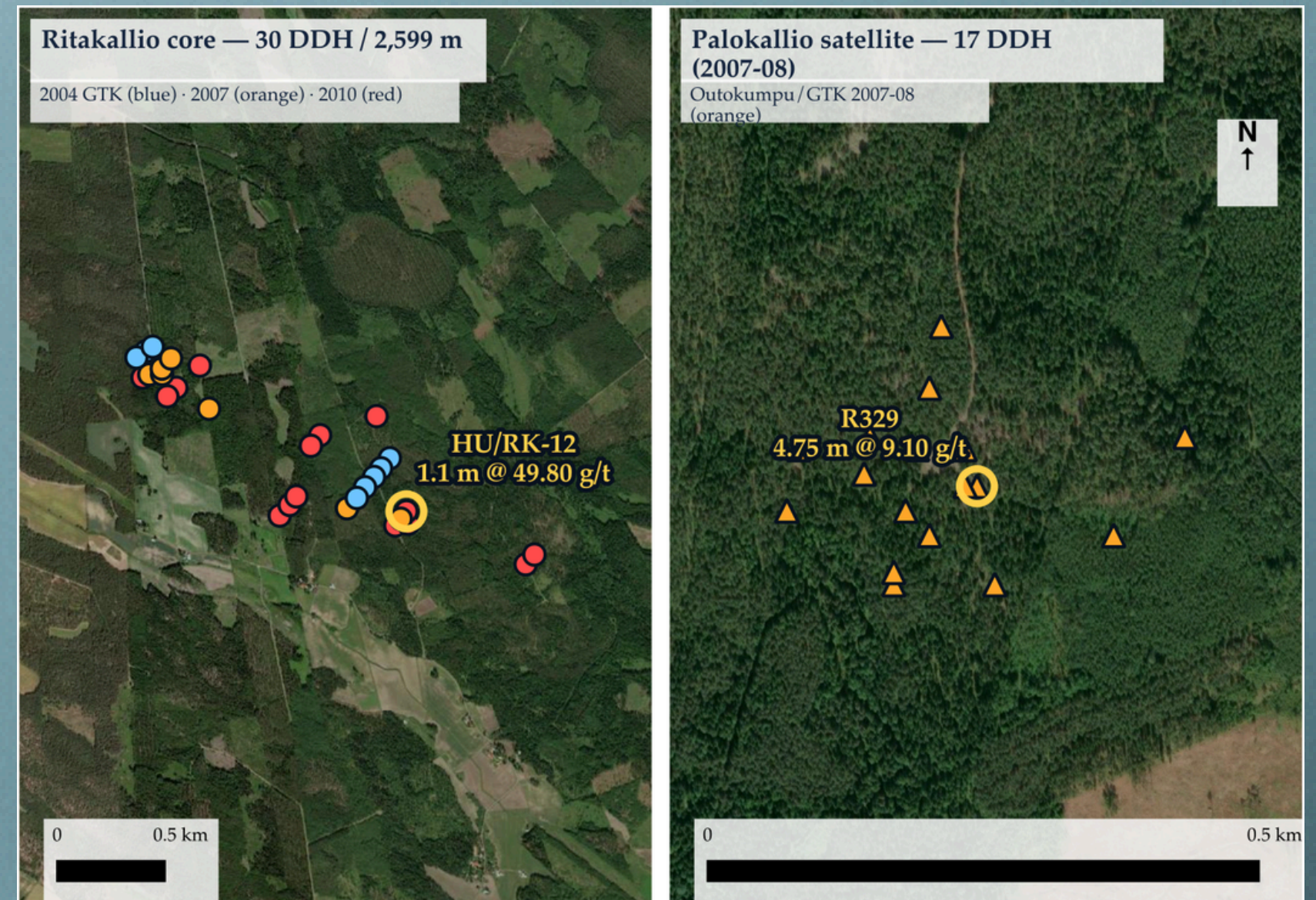
## Ritakallio core (30 holes; 21/30 $\geq 1$ g/t Au):

- **HU/RK-12** - 72.70-81.30 | 8.60 m @ 7.18 g/t Au (incl. 1.10 m @ 49.80 g/t Au)
- **HU/RK-21** - 78.40-99.10 | 20.70 m @ 1.43 g/t Au (ends 1 m above EOH)
- **HU/RK-17** - 0.40-4.55 | 4.15 m @ 2.57 g/t Au from surface (incl. 1.60 m @ 5.65 g/t Au) — just S of the filed Rita 1 boundary; southern-block recovery target
- **R311** - 31.40-38.00 | 6.60 m @ 1.25 g/t Au (NW shear)
- **Trench**: 1.20 m @ 14.87 g/t Au (incl. 0.30 m @ 57.07 g/t Au)

## Palokallio satellite (17 holes; 13/17 $\geq 0.5$ g/t Au):

- **R329** - 39.90-44.65 | 4.75 | 9.10 g/t Au (incl. 2.65 m @ 16.05 g/t; max 39 g/t)
- **R327** - 108.50-113.40 | 4.90 | 3.97 g/t Au (incl. 1.00 m @ 17.05 g/t — deep stacked zone)

- Composites: 0.5 g/t edge cut-off,  $\leq 3$  m internal dilution, length-weighted across the full interval; widths downhole.
- Both shoots open below ~85 m vertical, and Palokallio's W/S/E margins are untested — multiple extension targets.



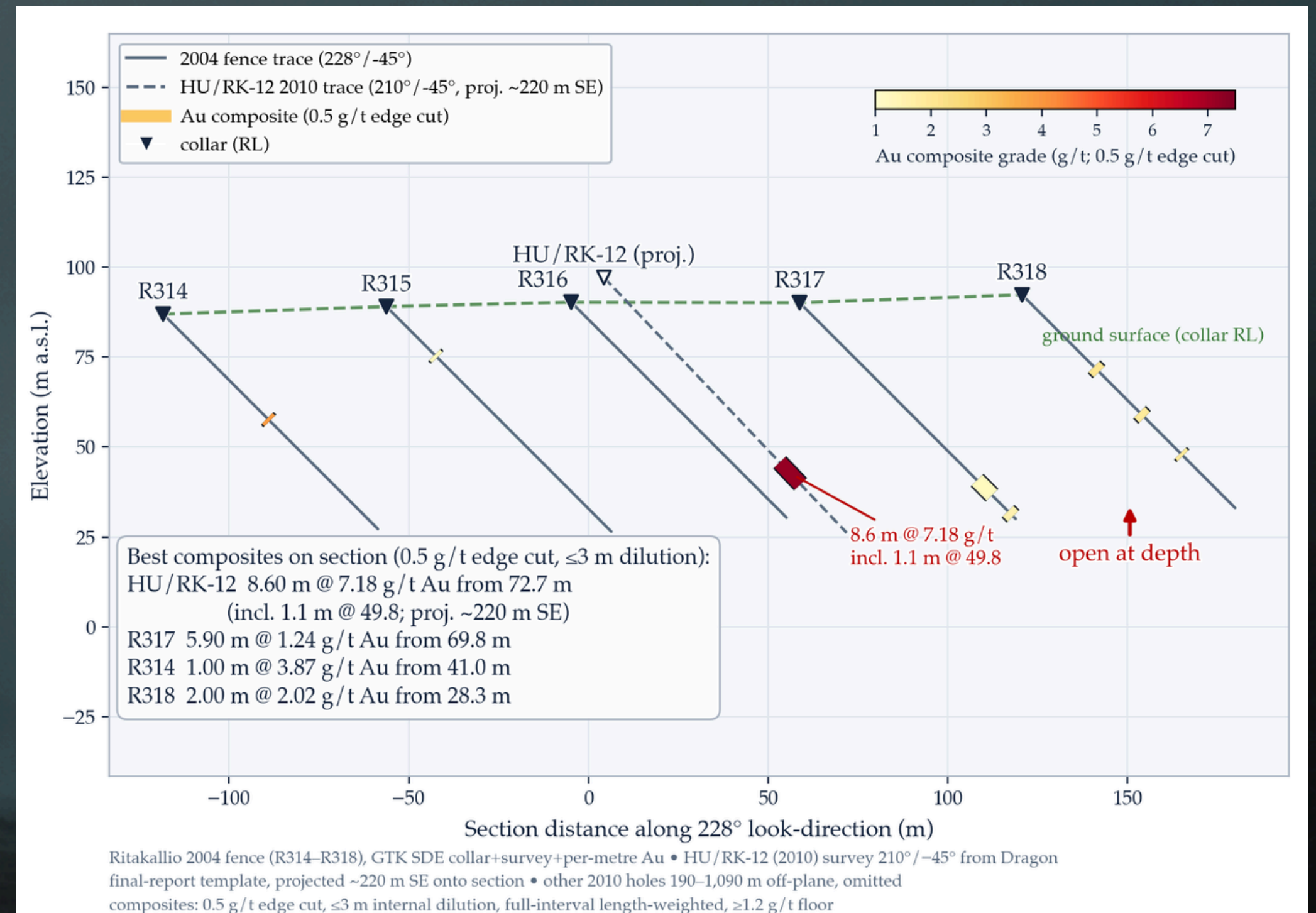
Drill-collar plans — Ritakallio core (30 holes) and the Palokallio satellite (17 holes), coloured by campaign; headline intercepts called out.

# Cross-Section



## Stacked Au zones down the SE fence — open at depth

- Ritakallio core, 2004 fence (R314–R318) plus HU/RK-12 — the 49.8 g/t 2010 hole, projected ~220 m along strike onto the section.
- HU/RK-12: 8.60 m @ 7.18 g/t Au from 72.7 m, incl. 1.1 m @ 49.80 (projected); R317: 5.90 m @ 1.24 from 69.8 m; R314: 1.0 m @ 3.87 from 41 m; R318: best 2.0 m @ 2.02 g/t.
- Mineralisation steps down-dip to the SW and is open at depth; hole geometry from GTK SDE and Dragon's final-report template (HU/RK-12: 210°/-45°).



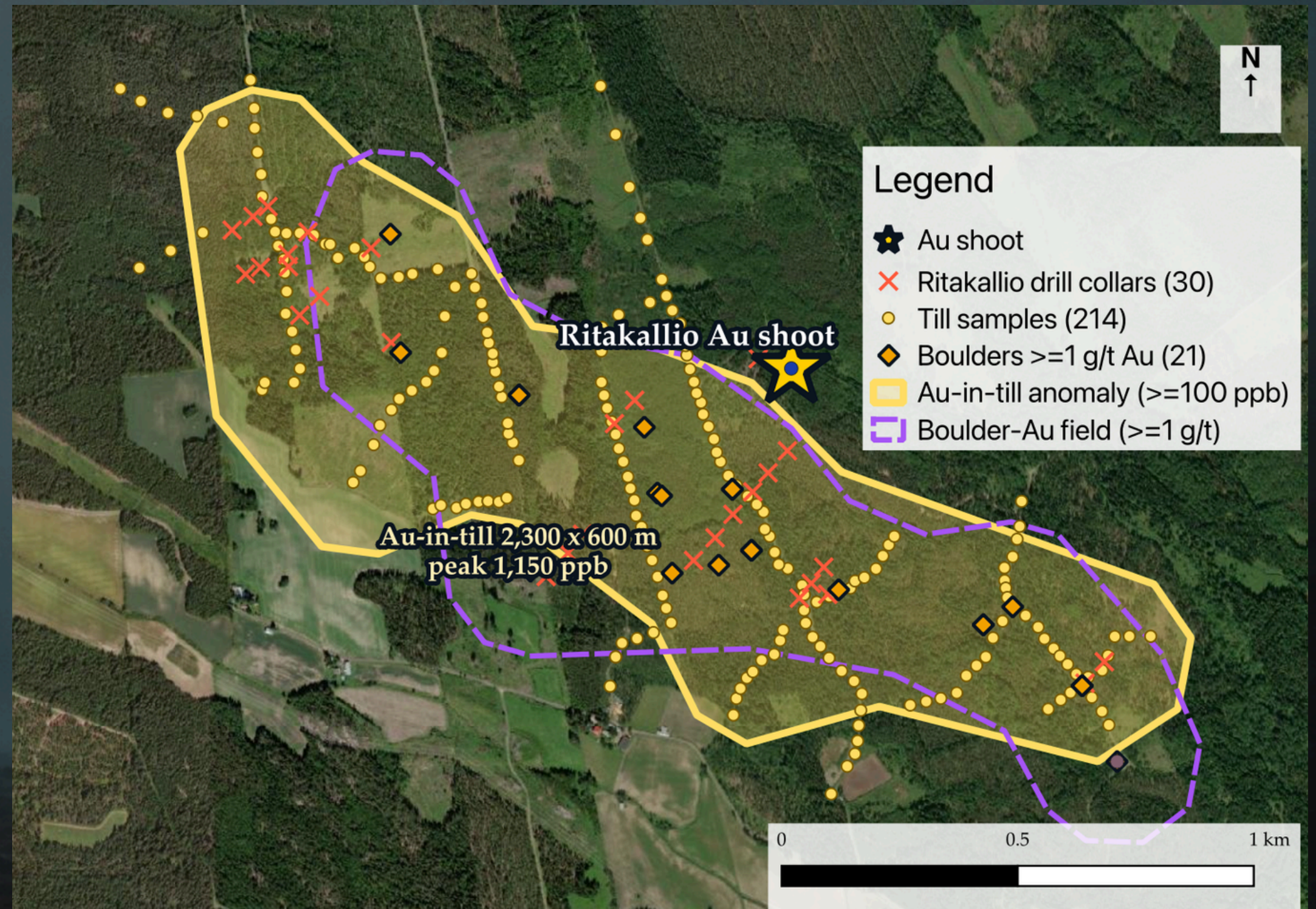
2004 fence (R314–R318) with HU/RK-12 projected ~220 m onto section; composites at 0.5 g/t edge cut. GTK SDE + Dragon final-report data.

# Surface Geochemistry



## A 2,300 x 600 m gold-in-till anomaly over the drilled core

- Till: 214 GTK samples, peak 1,150 ppb Au; 23 samples  $\geq 100$  ppb.
- Boulders: 42 GTK points, 21  $\geq 1$  g/t Au, peak 36.2 g/t; percussion rock-chip to 8.48 g/t Au.
- Palokallio pathfinder: Au-Bi Spearman  $\rho = 0.86$  (block-bootstrap CI +0.81 to +0.89) — clean orogenic-gold signature.



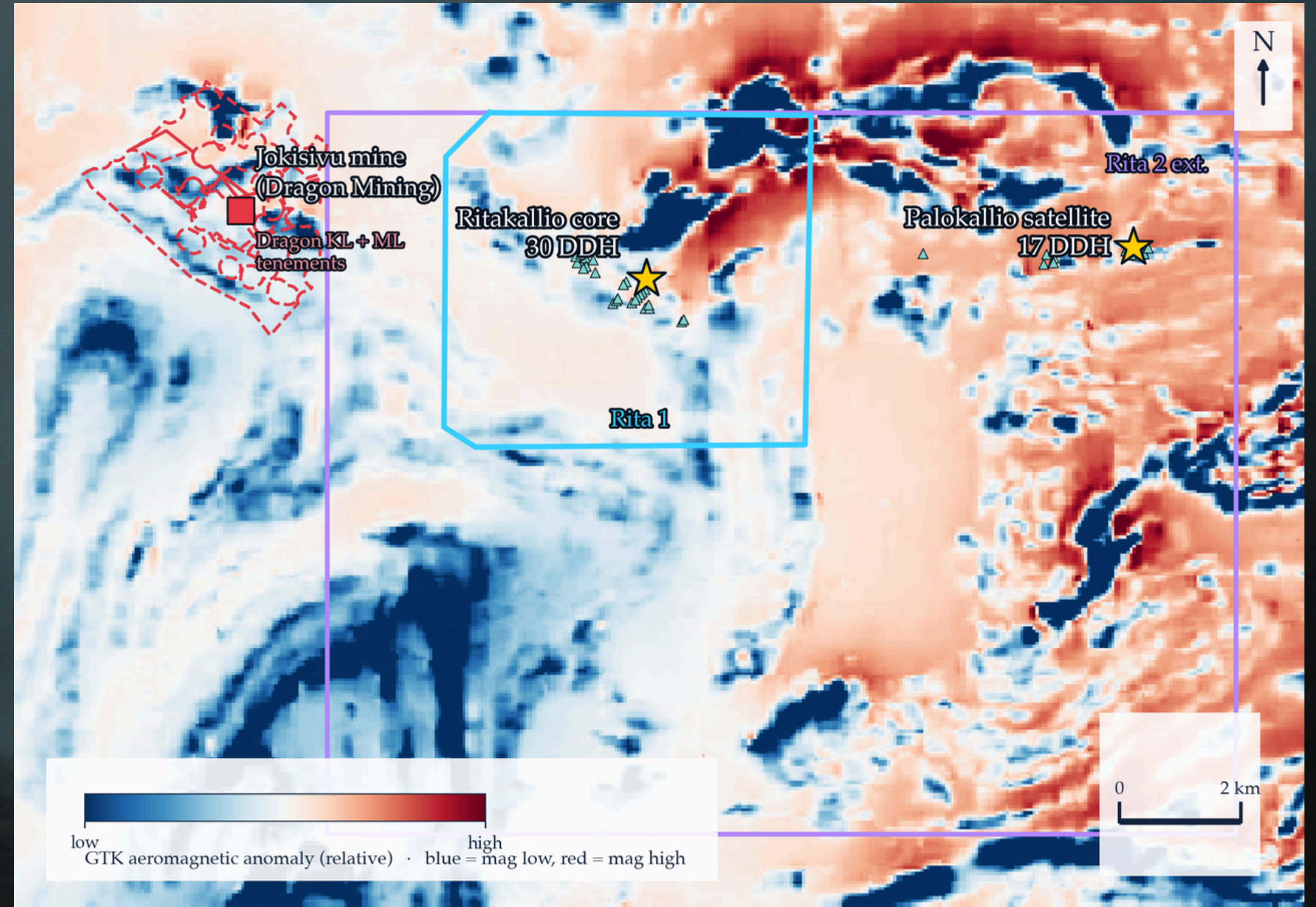
Gold-in-till anomaly ( $\geq 100$  ppb) and  $\geq 1$  g/t boulder field over the drilled core — 214 GTK till samples + 42 boulder sites. GTK geochem.

# Geophysics



## Aeromagnetic Expression

- The Vammala belt's NW–SE magnetic grain ties the ground together — Jokisivu, the Ritakallio core and the Palokallio satellite all sit along one structural trend.
- Palokallio occupies a discrete magnetic high (top ~5% of the local grid); Ritakallio sits on the gradient between a belt high and a sharp low — the demagnetized-shear signature typical of orogenic gold.
- Along-strike magnetic-high segments inside the Rita 2 umbrella are still undrilled — a ready geophysical drill vector.

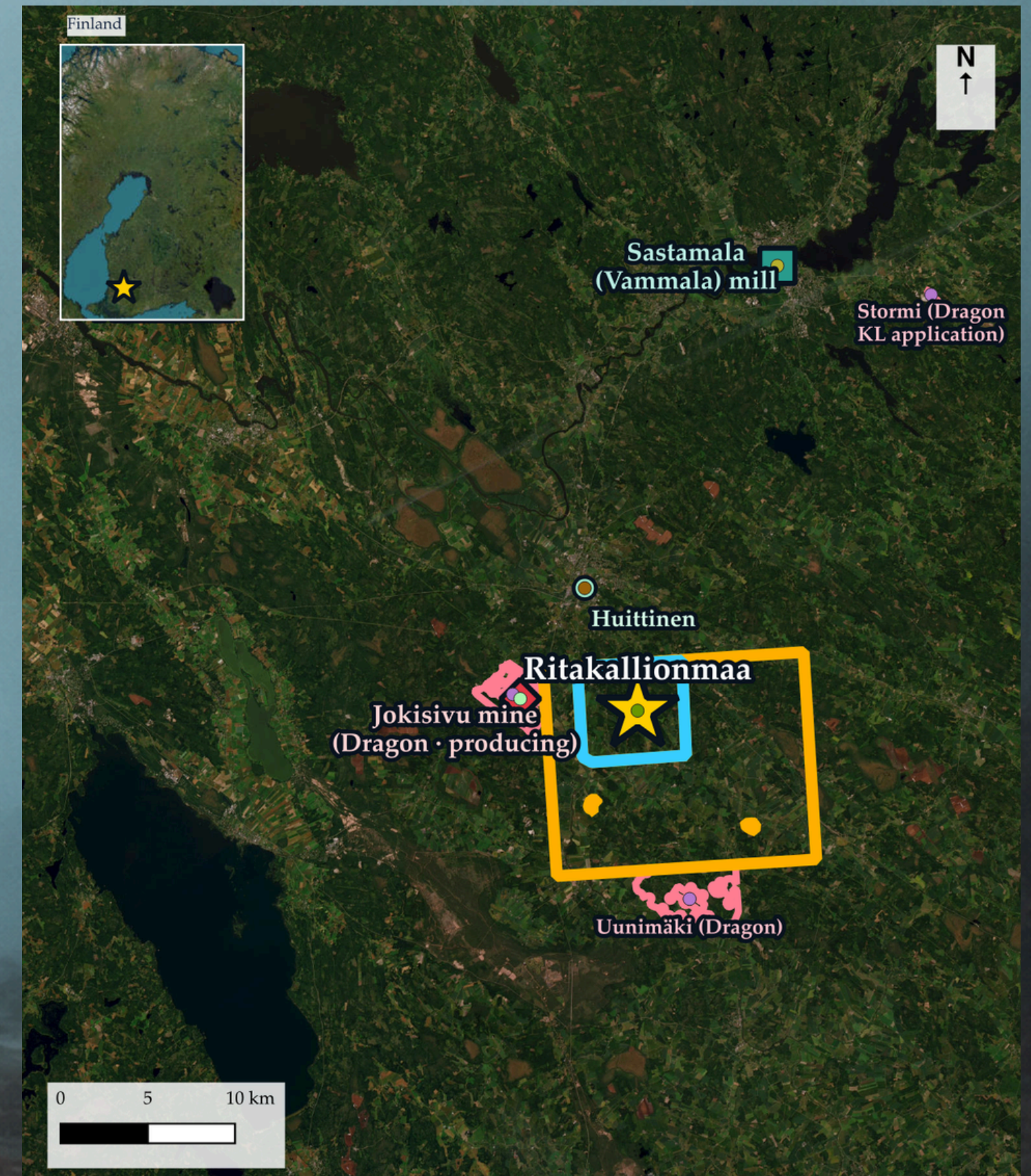


GTK aeromagnetic image — Jokisivu, Ritakallio and Palokallio on one NW–SE structural trend; Rita 1 / Rita 2 and Dragon tenements outlined.

# Location & Infrastructure

## Rita 1 + Rita 2 extension — 11,442 ha secured

- Rita 1 filed over the drilled core.
- Rita 2 extension— its west boundary is contiguous with Dragon's live Jokisivu 10 permit, zero gap by design.
- Tier-1 EU jurisdiction; the Sastamala (Vammala) gold mill is nearby — a ready processing route.
- Borders Dragon's Uunimäki gold project to the south, where historic GTK drilling delivered near-surface gold intercepts including:
  - 9 m @ 5.10 g/t gold from 97 m; and
  - 6 m @ 3.70 g/t gold from 41.70 m



Location & infrastructure — Jokisivu mine, Dragon tenements and the Sastamala (Vammala) gold mill; Finland locator inset.

# How Rita Compares



Same belt, same paragenesis: producing (Jokisivu) → resource-stage (Unimäki) → drill-ready (Rita)

Project	Stage	Best Intercept	Widest Intercept	Depth
Ritakallio (Geomorphic)	30 holes, open	8.6 m @ 7.18 g/t Au	20.7m @ 1.43 g/t Au	~85 m vertical
Palokallio (Geomorphic)	17 holes, open	4.75 m @ 9.1 g/t Au	5 m @ 1.21 g/t Au	~85 m vertical
Unimäki (Dragon)	21 holes - MRE expected 2026	2.5 m @ 39.68 g/t Au	4.3 m @ 10.39 g/t Au	~120 m vertical
Jokisivu (Dragon)	3.7 Mt @ 2.8 g/t Au mined since 2009 Updated MRE expected	1.15 m @ 182.65 g/t Au	8.8 m @ 10.61 g/t Au	~645 m

- Rita's top intercepts carry 43-62 gram-meters. The same order as the holes taking Unimäki to its maiden MRE.
- Rita is untested below ~85 m vertical. Jokisivu's drilling at the 360-460 m levels show what the belt carries at depth.
- Widths downhole; our composites at 0.5 g/t edge cut, <=3 m internal dilution, full-interval weighted.

# Why Now?



## Regional consolidation story

- Ritakallio and Palokallio were drilled between 2004 and 2010 and relinquished in 2015 — gold's best annual average in that era was ~\$1,669/oz (2012).
- Dragon's 2025-26 belt push — 132 holes / ~21,000 m at Jokisivu, 21 holes at Uunimäki (best 2.50 m @ 39.68 g/t Au) and a new 1,269 ha Uunimäki reservation — with an initial Uunimäki JORC resource committed for end-2026.



Diamond drilling at Ritakallio — hole R313, 2004 GTK campaign

# Contact

**Jeff Phillips, VP of BD**  
jeff@geomorphic.ai

**Mark Sumner, Executive Director**  
mark@geomorphic.ai

**Shawn Grening, Executive Director**  
shawn@geomorphic.ai