

Q2 2026

Pora Gold Project

Raahe-Ladoga Gold Belt

Ostrobothnia, Finland

Contact

jeff@geomorphic.ai

www.geomorphic.ai



GEOMORPHIC AI

Project Highlights



7.97 g/t Au vein

Bedrock quartz-arsenopyrite vein — 4-for-4 gold samples

#1 of 34,815

The highest gold-in-till sample in all of Finland

2 Moz next door

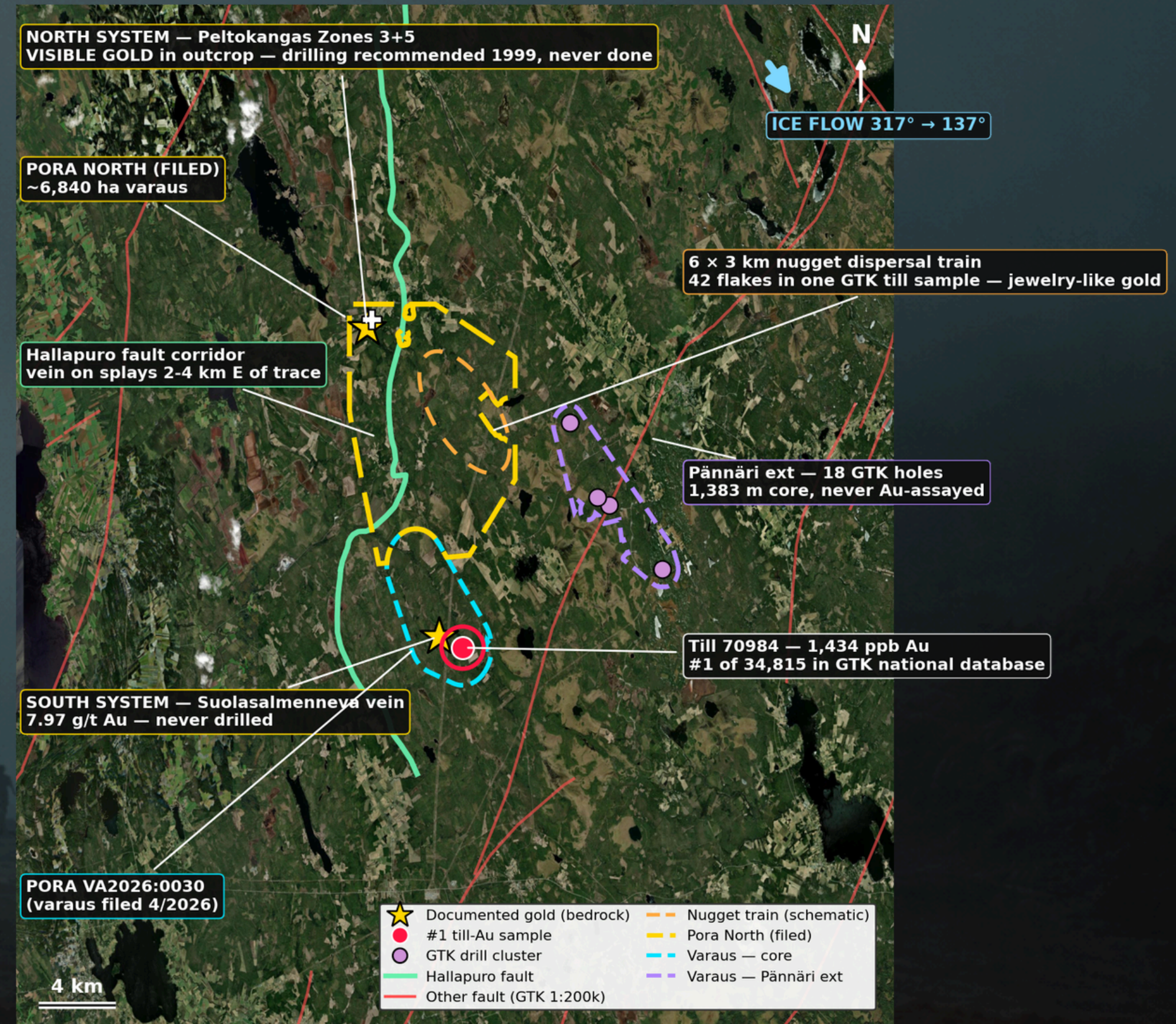
Same suture as the ~2 Moz Laivakangas deposit (32.3 Mt @ 1.53 g/t Au)

- A district-scale orogenic gold play on **Finland's premier gold suture** — two documented systems 12 km apart on one named shear corridor.
- **South: a 7.97 g/t Au bedrock vein**, with **Finland's #1 gold-in-till sample** (1,434 ppb Au) directly down-ice.
- **North: visible gold in outcrop** at two zones + a **6 x 3 km nugget dispersal train** — GTK (Geological Survey of Finland) recommended drilling in 1999; never done.
- The Hallapuro fault corridor links the southern vein to the northern zones — 12 km that has never been till-sampled (one GTK sample in the gap). Forty years of work targeted limestone, iron, nickel, lithium — never gold.
- Southern block reserved; northern block filed.

Project Location

Two documented gold systems, 12 km apart, on one mapped structural corridor

- South System:
 - Suolasalmenneva: four bedrock vein samples at 1,430 / 2,050 / 2,320 / 7,970 ppb Au across a 2 m quartz-arsenopyrite zone — never drilled.
 - Till anchor: 1,434 ppb Au = #1 of 34,815 in GTK's national gold-till database (next-highest 0.97 ppm, in Lapland), 1.3 km down-ice of the vein.
- North System:
 - Peltokangas: visible gold in outcrop at two zones, 42 gold flakes from a single GTK till sample at the zone outcrops, As pathfinder to 998 ppm — never drilled.
- One structural corridor — the Hallapuro fault (Perho shear zone) — links the two systems; the southern vein sits on splays 2-4 km east of the mapped trace.



Pora Zones

Visible Gold



Northern system: coarse, jewelry-like gold shed from a nearby bedrock source

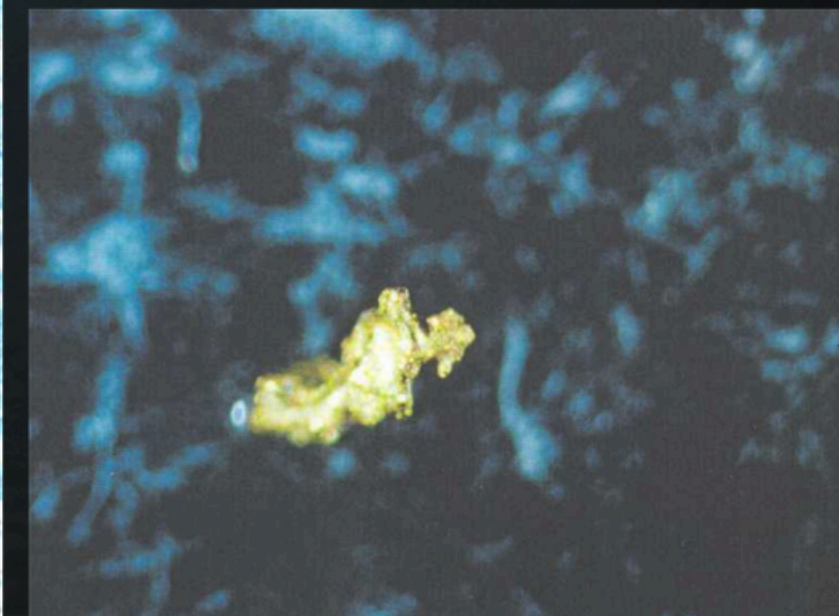
- A 6 × 3 km nugget dispersal train on the northern block, 12 km up-corridor from the Suolasalmenneva vein: prospector panning plus GTK pitting (60 excavator pits) and heavy-mineral sampling — GTK's own heavy-mineral till sample at the zone outcrops returned 38 gold flakes (Lindmark 1999).
- X-ray microprobe confirms the panned grains are native gold (1-7% Ag, up to ~6% Cu) — compositional families that point to more than one nearby bedrock source.
- Visible gold in outcrop at Peltokangas, on the northern block: free gold in the Zone 3 vein swarm (35-50 m wide) and disseminated through all minerals of the Zone 5 quartz breccia (25 m).
- Drilling recommended in 1999 — never done.



Coarse gold nugget — Mehtä-Poranen pit (GTK / Lindmark 1999, Fig. 6)



Gold lump, sulphide inclusions (Fig. 7)



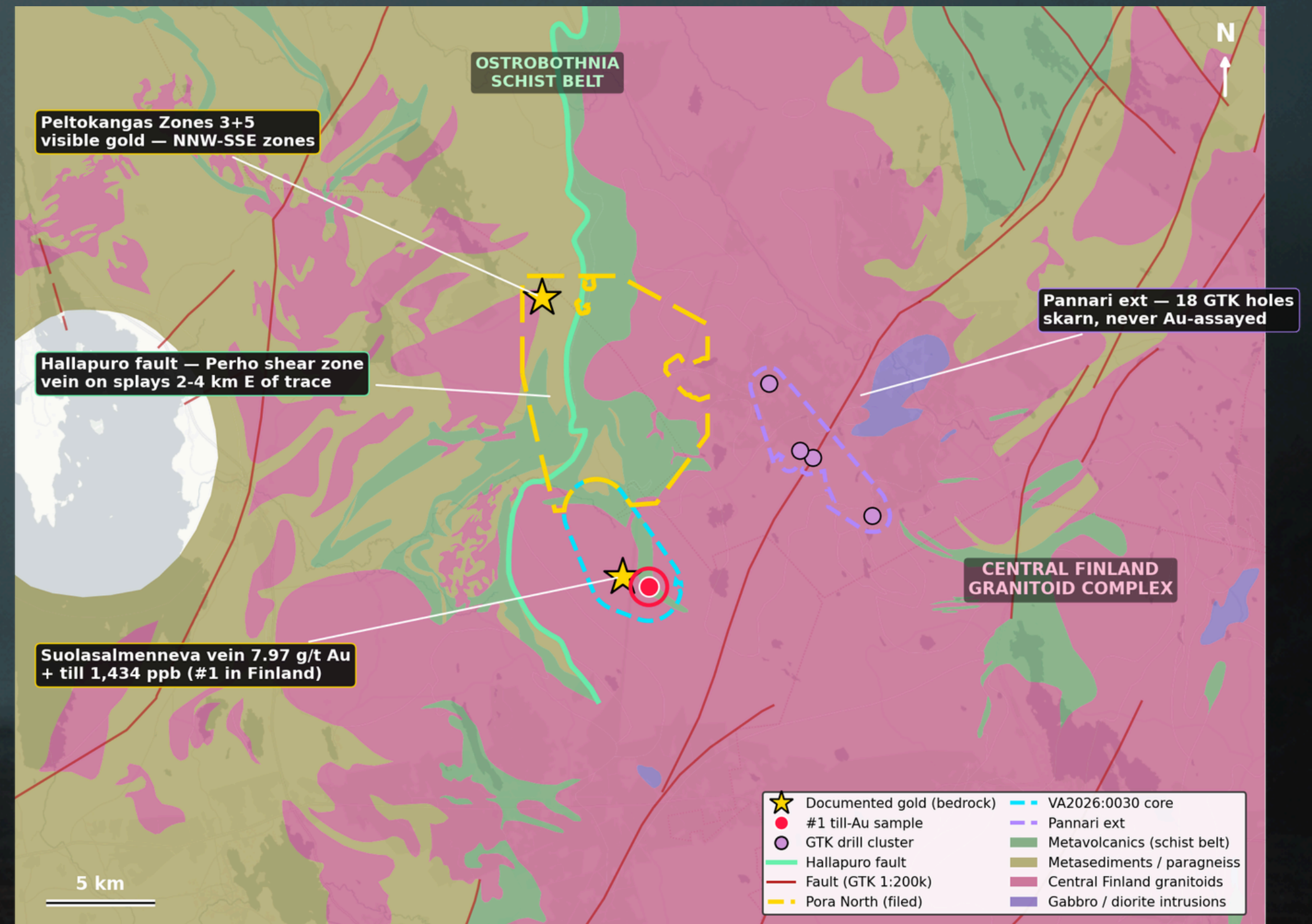
Panned gold flake, magnified (Fig. 9)

Regional Geology



Svecofennian orogenic gold on the Raahe-Ladoga suture

- 1.9-2.0 Ga metavolcanics + metagraywackes at the Ostrobothnia Schist Belt / Central Finland Granite contact.
- NE-SW transpressional Perho shear zone intersecting NNW-SSE mineralized zones at high angle — dilational jogs favour gold.
- Cu-bearing gold signature (microprobe: Au + 1-7% Ag + up to ~6% Cu).



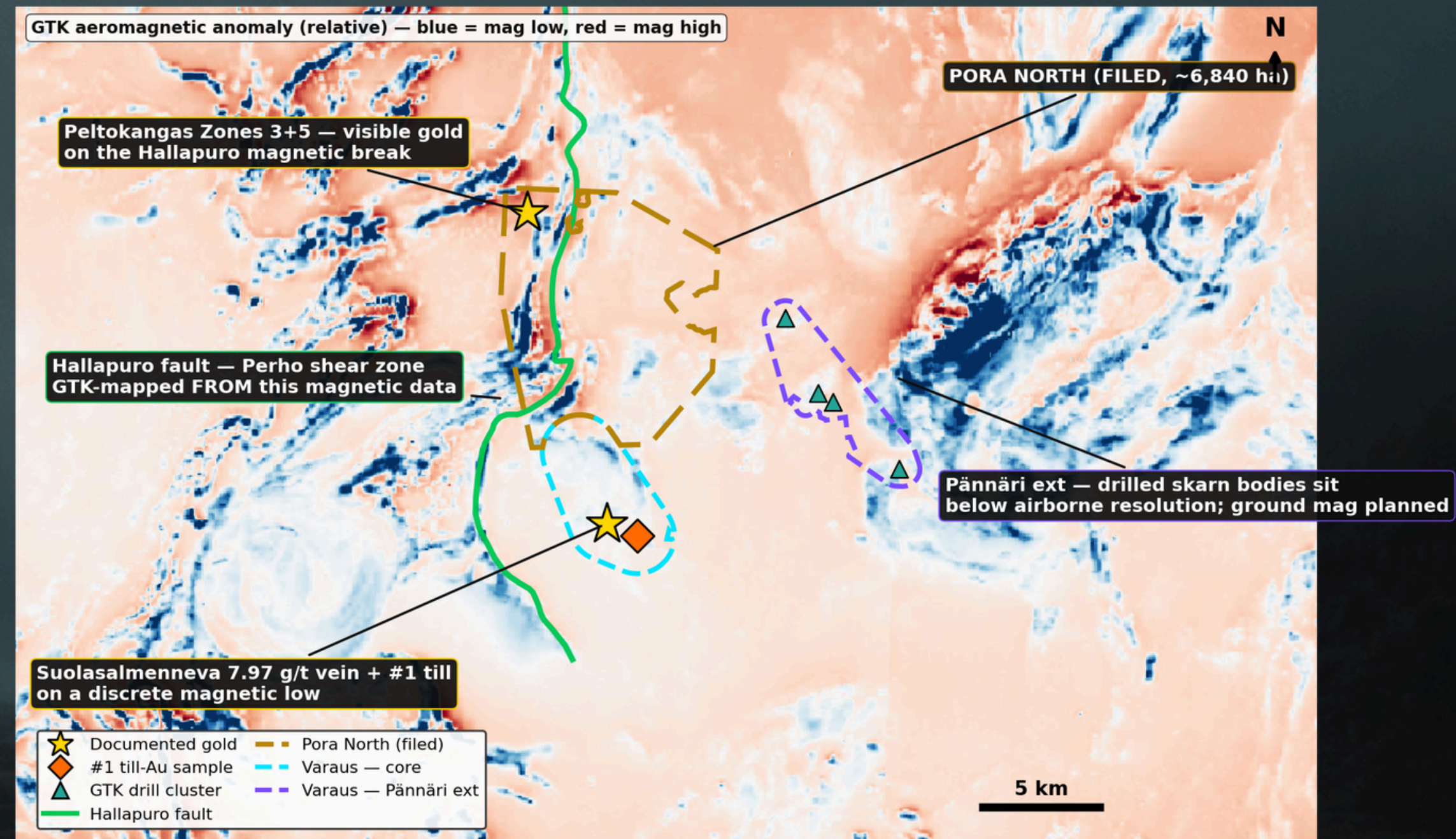
GTK 1:200k Bedrock of Finland

Geophysics



Aeromagnetic Expression

- The southern vein-and-till pair sits on a discrete GTK aeromagnetic low — magnetite destruction along the sheared, altered corridor that hosts orogenic gold.
- The Hallapuro fault — interpreted by GTK from this magnetic data — defines a 12 km corridor linking both systems; the southern vein-and-till pair sits on a subsidiary strand 2-4 km east of the named trace.
- At Pännäri the drilled skarn bodies are too small to register at the survey's 200 m line spacing — ground magnetics in the work program maps the skarn trend before drill targeting.

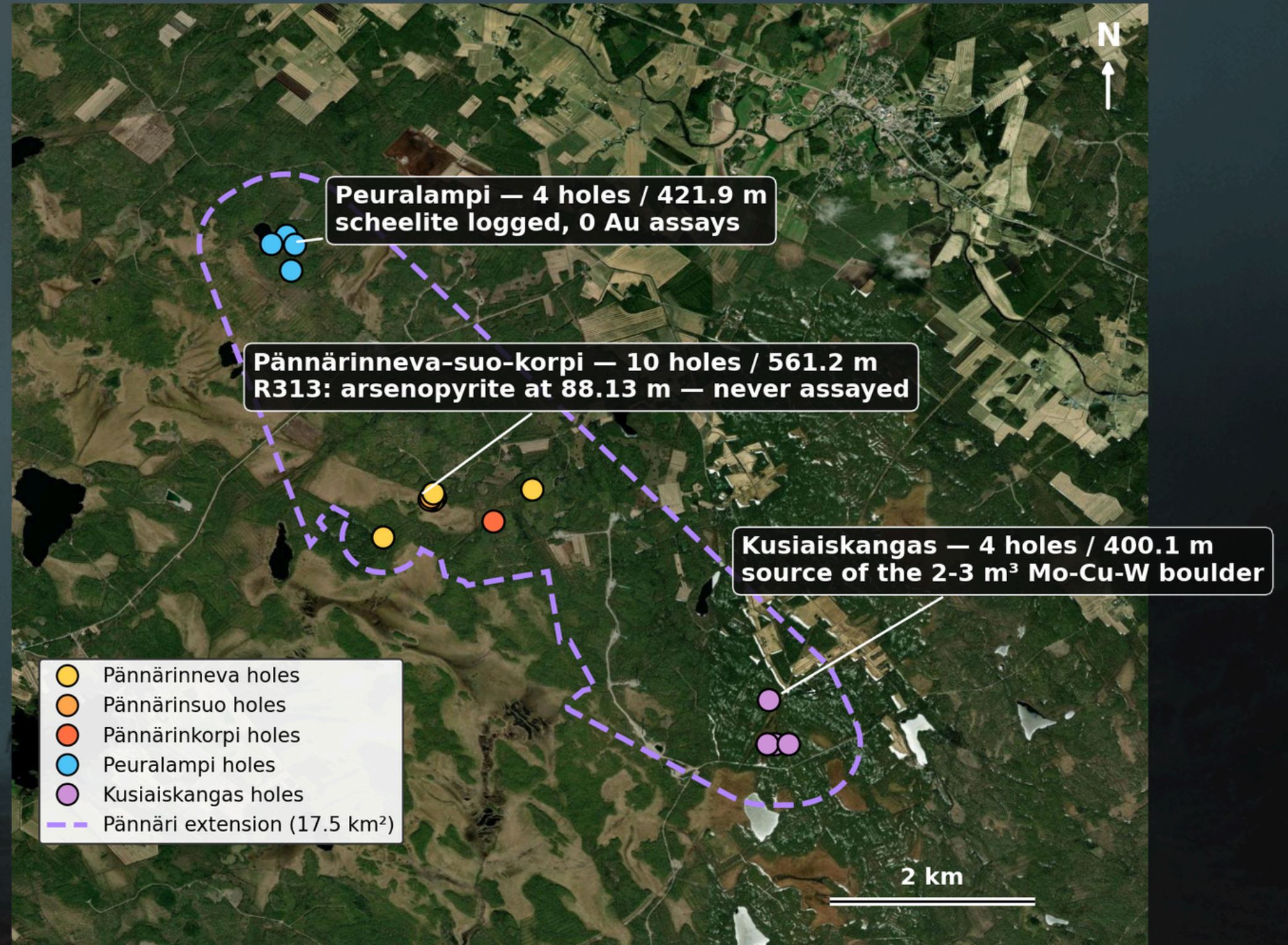


GTK Airborne Survey

Historical Drilling

1,383 m of GTK core on the project — never assayed for gold

- 18 GTK holes / 1,383 m (1981-84) in five clusters — Pännärinneva, -suo, -korpi, Peuralampi and Kusiaiskangas — all inside the Pännäri extension.
- The drilling proved a fertile hydrothermal system — pathfinders, not the prize: 25 m @ 36% Fe + 17 m @ 39.5% Fe magnetite skarn, Cu to 970 ppm, the Mo-Cu-W boulder train, scheelite, arsenopyrite at 88.13 m (R313).
- Gold was never assayed — 18 base-metal samples in 3 of 18 holes, zero Au/As/Sb/Te/W in 1,383 m. The core sits at GTK Loppi — a re-assay = the first-ever gold dataset.



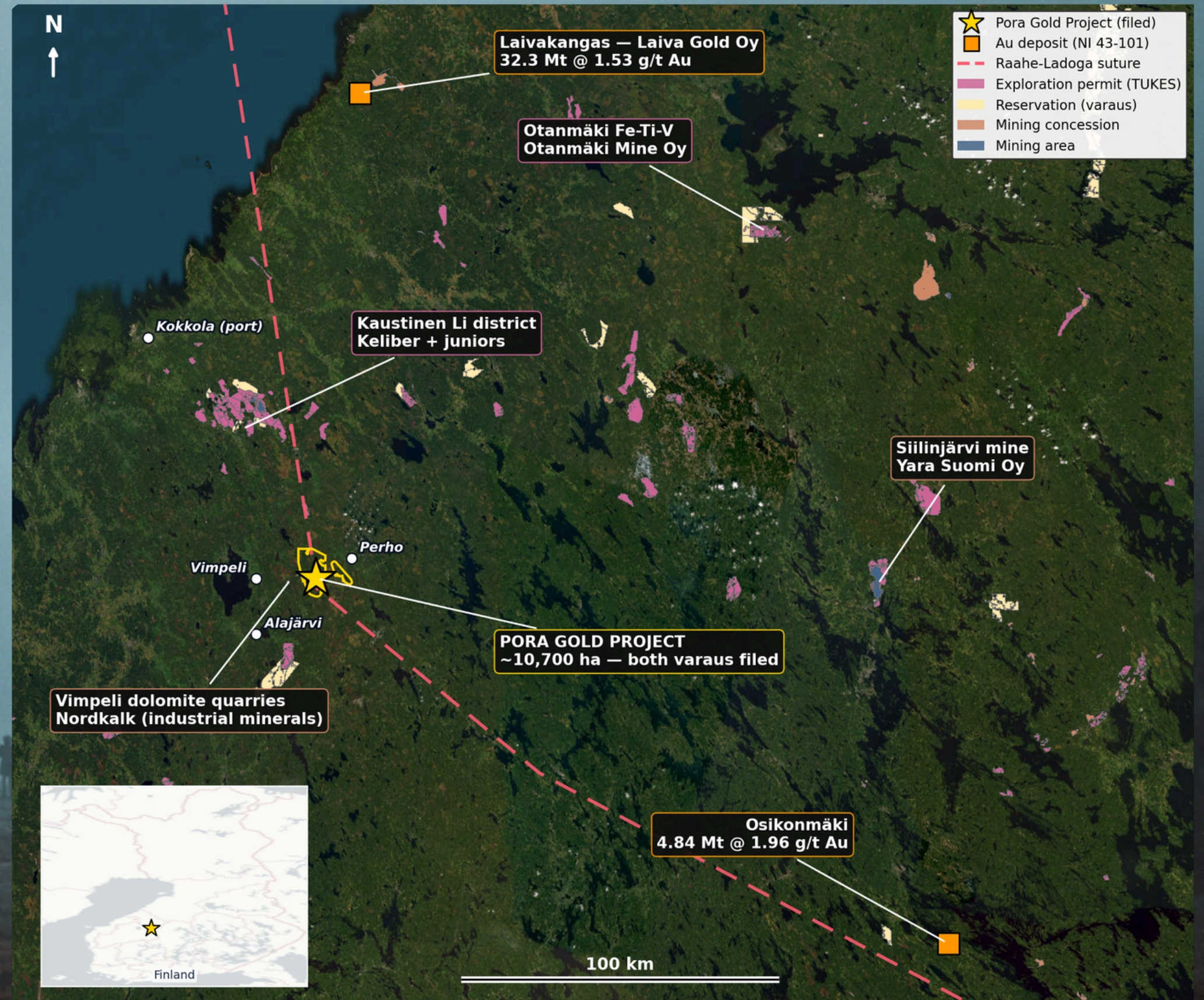
GTK Campaigns 1981-84

Location, Infrastructure & Landholders



First-mover position on an open gold suture

- 63.125°N, 24.195°E — a ~10,700 ha contiguous district holding.
- Ostrobothnia, Finland — tier-1 EU jurisdiction, road-accessible, archived GTK core at Loppi.
- Laivakangas, ~152 km N: 32.3 Mt @ 1.53 g/t Au (Laiva Gold Oy). Osikonmäki, ~227 km ESE: 4.84 Mt @ 1.96 g/t Au.
- Active belt — Keliber's Kaustinen Li district 50 km N — yet no metallic tenure within 20 km of Pora: first-mover gold ground.



Contact

Jeff Phillips, VP of BD
jeff@geomorphic.ai

Mark Sumner, Executive Director
mark@geomorphic.ai

Shawn Grening, Executive Director
shawn@geomorphic.ai